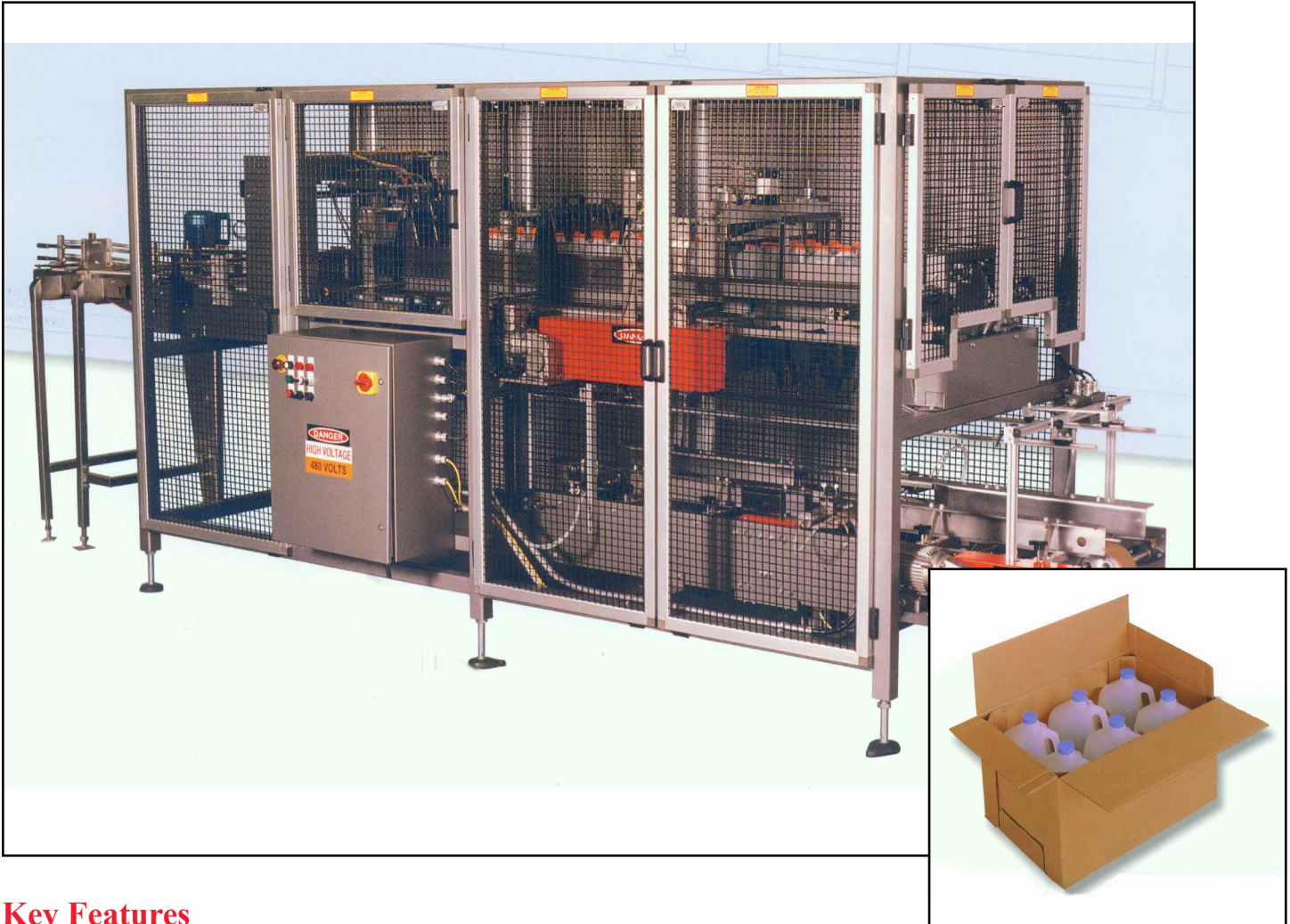


Continuous Packing of Glass, Plastic, Fiber or Metal Containers SWF DP 320 Drop Packer



Key Features

- Packs up to 25 cycles per minute
- Plastic belting for smooth transfers
- Down product detector
- Case indexing conveyor
- Low pressure pneumatic case platform
- Simple, clean design
- Fast changeover
- Allen-Bradley PLC
- Interlocked safety guarding

Continuous Packing of Glass, Plastic, Fiber or Metal Containers

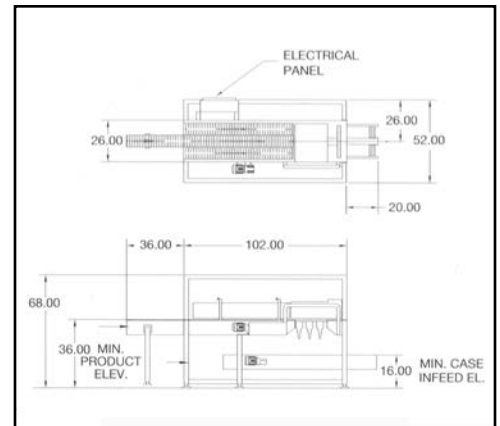
SWF DP 320 Drop Packer

The SWF DP 320 Drop Packer is built on a foundation of simple design for efficient, vertical casepacking. Various product infeed configurations are available and are custom designed for your application in order to best suit the case load pattern. A case elevator minimizes the drop distance and also allows for a soft landing of the product. Cases are indexed through on a conveyor below the drop zone.

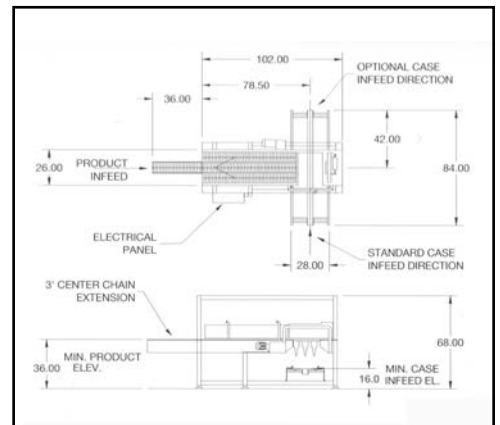
Layout flexibility is designed into the DP 320 Drop Packer, as cases can be brought in from any direction and exit in any direction. Integration with new or existing case formers and sealers is accomplished with simple connecting conveyors. Wash-down construction options allow for installation within the processing area.

Optional Features

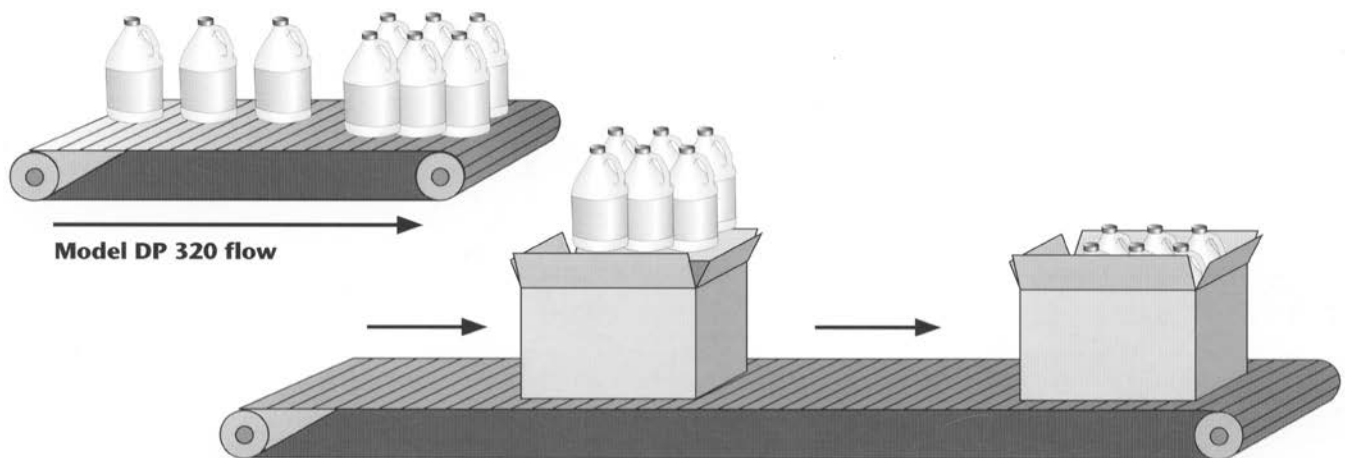
- Cross feed case conveyor
- Stainless steel construction
- Centralized grease blocks or automatic lubrication systems
- Product handling devices including converging, diverging, accumulating and positioning devices
- Servo controlled product indexing/accumulating feed conveyors
- NEMA 4X electrical controls
- Downstream photo eye for auto start/stop



In-line flow



Cross flow



All sales are subject to our prevailing terms and conditions. Illustrations and specifications are subject to change without notice. Machines shown without guards are for illustrative purposes only. Guards are supplied and must be in place before operation.