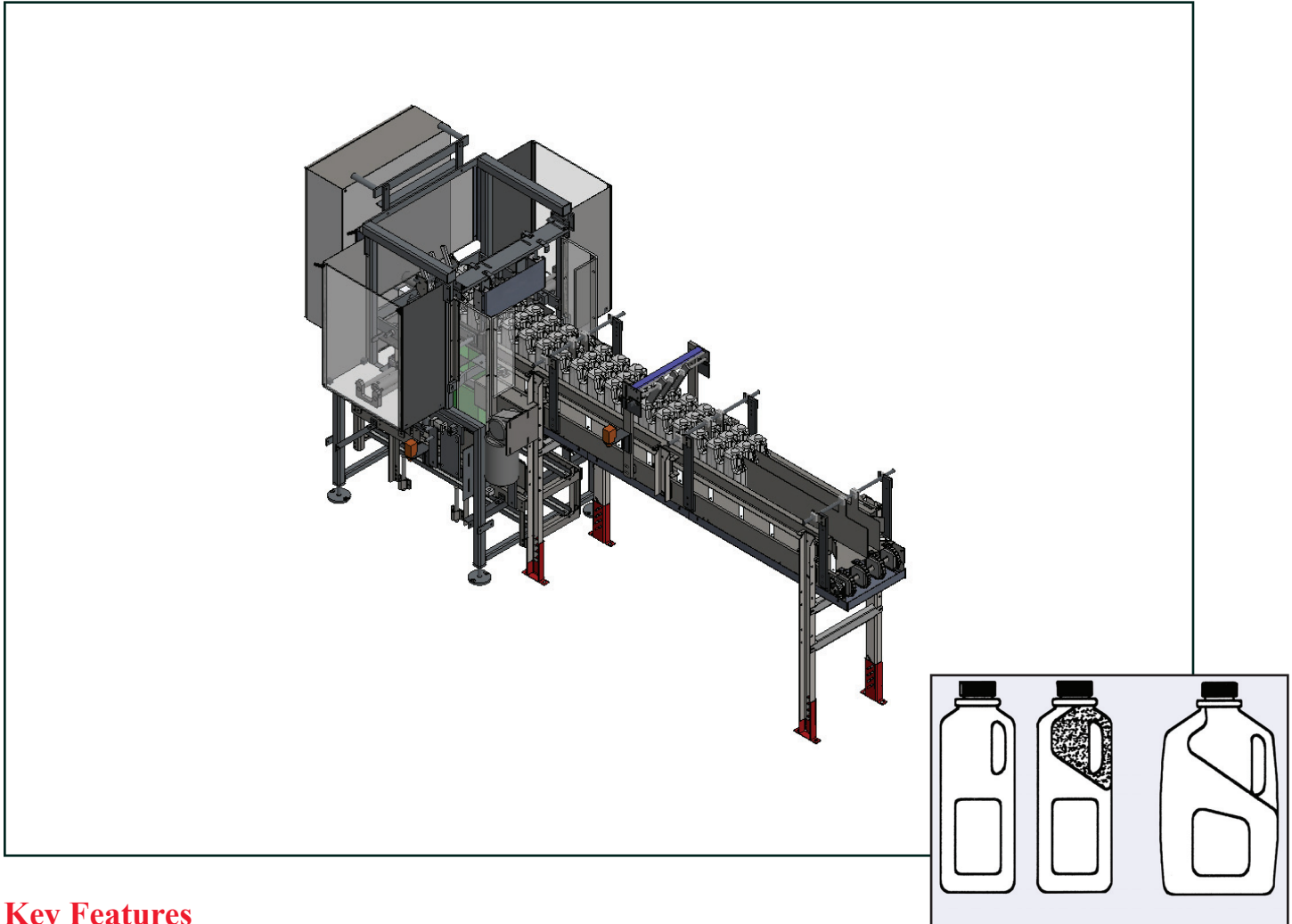


## Automatic Plastic Container Caser Pak Tek Plastic Container Caser II



### Key Features

- Simple, efficient design
- Dual case positioning stops
- Corrosion-resistant design
- Gentle product lowering, no dropping
- Quick change heads
- PLC controls with Ethernet
- Safety interlocked guard doors
- Touchscreen interface
- Diagnostic with history screens

# Automatic Plastic Container Caser

## Pak Tek Plastic Container Caser

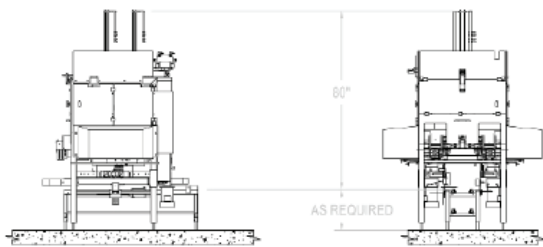
Pak Tek Plastic Container Casers give you innovatively simple, efficient, clean design, along with corrosion-resistant construction that is guaranteed to optimize your dairy case packing. You can choose multiple pattern configurations to suit your specific needs.

Pak Tek PLC-controlled Plastic Casers offer you the flexibility to change between a full array of plastic containers, plastic dairy bottles and other types of bottles, in a matter of minutes. You can extend your versatility with a number of options including single or dual heads and infeeds. Whether you choose the standard machine or full options, you'll get the advantage of Pak Tek durability and reliability.

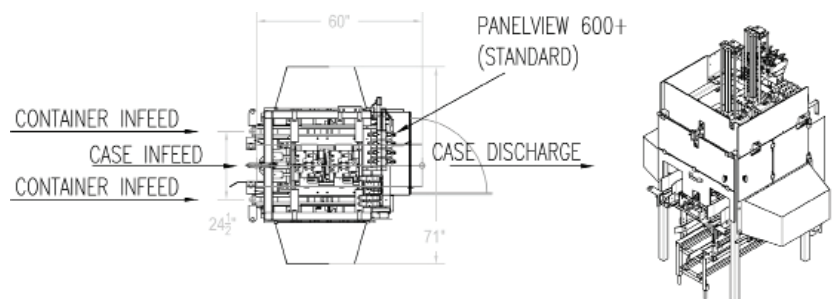
### Optional Features

- Customer requested PLC
- Single or dual head
- Single or dual infeed
- Accommodates a variety of plastic container sizes
- Multiple pattern configurations
- Can be configured for corrugated cases

Specifications	
<b>Production Speed</b>	
Up to 13 cycles per minute	
<b>Container Size Range</b>	
Plastic dairy bottles (HDPE), single-serve plastic bottles (HDPE & PET) in plastic dairy crate or corrugated box	
<b>Hydraulic Usage</b>	
.5 to .8 gpm per cycle, depending on model	
<b>Pneumatic Usage</b>	
90 psi	
<b>Electrical Requirements</b>	
Controls	110 Volts, single phase, 60 Hz
Table Top Drive	230-460 Volts, 3 phase, 60 Hz



Elevation View



Top View

NOTE: TYPICAL DUAL HEAD DUAL INFEEED SHOWN ABOVE, DIMENSIONS WILL VARY BETWEEN CONFIGURATIONS.

All sales are subject to our prevailing terms and conditions. Illustrations and specifications are subject to change without notice. Machines shown without guards are for illustrative purposes only. Guards are supplied and must be in place before operation.