

## SWF Side Flange Case Sealer CS 100SF



### Key Features

- Up to 35 cases per minute
- Mechanical simplicity offers easier maintenance
- Hot melt side flange case sealing
- Positive flight bar case transfer
- Powered discharge
- PLC controls
- Simple operator interface with display

# SWF Side Flange Case Sealer

## CS 100SF

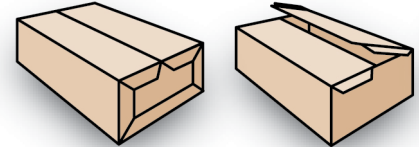
Thiele's SWF model CS 100SF case sealer is a rugged, highly efficient case sealer for side flange seal cases. Changeover is simple with optional hand-cranks or levers so that no tools are required. Designed especially to handle heavy products, cases are transferred through the sealer with flight bars to allow positive transfer and maintain square flap sealing. The automatic case indexing gate allows the CS 100SF to be part of your system with no operator intervention needed.

For more than 60 years, the SWF product line has been a leader in bliss, tray and case erecting and sealing solutions. We can help your corrugated supplier to determine the best packaging design and machinery solution for your application.

### Optional Features

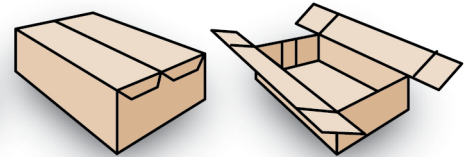
- Kwik-change features
- Corrosion-resistant packages
- Full-depth flap seal
- Custom case size range
- Upgraded PLC
- Three-color stack light
- Extra E-stop station

| Case Size Capabilities |               |              |
|------------------------|---------------|--------------|
|                        | Minimum       | Maximum      |
| Length                 | 9" (229 mm)   | 26" (660 mm) |
| Width                  | 10" (254 mm)  | 16" (406 mm) |
| Depth                  | 4.5" (114 mm) | 16" (406 mm) |



Bliss Box Side Flange Seal

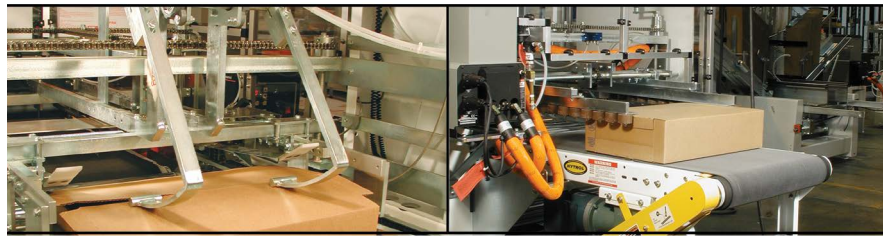
Partial Overlap Side Flange Seal



Tray or RSC Side Flange Seal

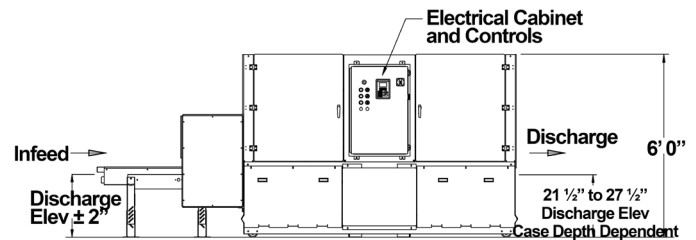
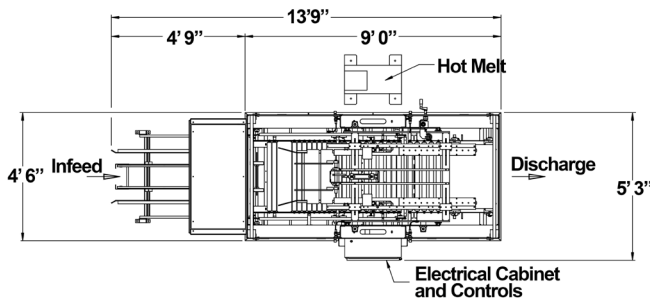
Tray Full Depth Side Flange Seal

*The designs shown above are just a few examples of cases sealed on the CS 100SF. For sizes not fitting within the standard dimensions shown here, Thiele Technologies welcomes the opportunity to assist in designing a system to seal cases which exceed production model limitations.*



Positive trailing flap tucker (closer)

Powered discharge conveyor



*All sales are subject to our prevailing terms and conditions. Illustrations and specifications are subject to change without notice. Machines shown without guards are for illustrative purposes only. Guards are supplied and must be in place before operation.*